

How to Examine for Head Lice

USE A BRIGHT LIGHT TO LOOK AT:

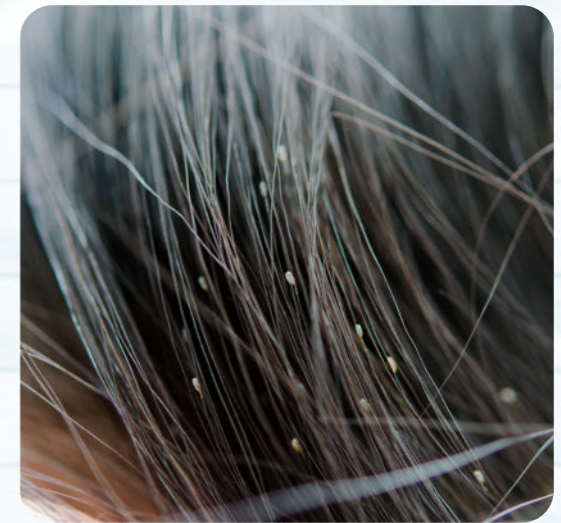
- ① Crown of head
- ② Behind both ears
- ③ Nape of Neck



HOW TO INSPECT:

- ① With gloved hands, separate hair and create a part. The part should allow you to clearly see the scalp.

- ② Look for lice where the hair is parted or on the hair shaft. The lice will be dark in color and the size of a sesame seed.



- ③ Look for nits near hair follicle about $\frac{1}{4}$ inch from the scalp. Nits (eggs) will be white or yellowish-brown. Nits are often easier to see than lice.

Original Non-Toxic
Licefreee!